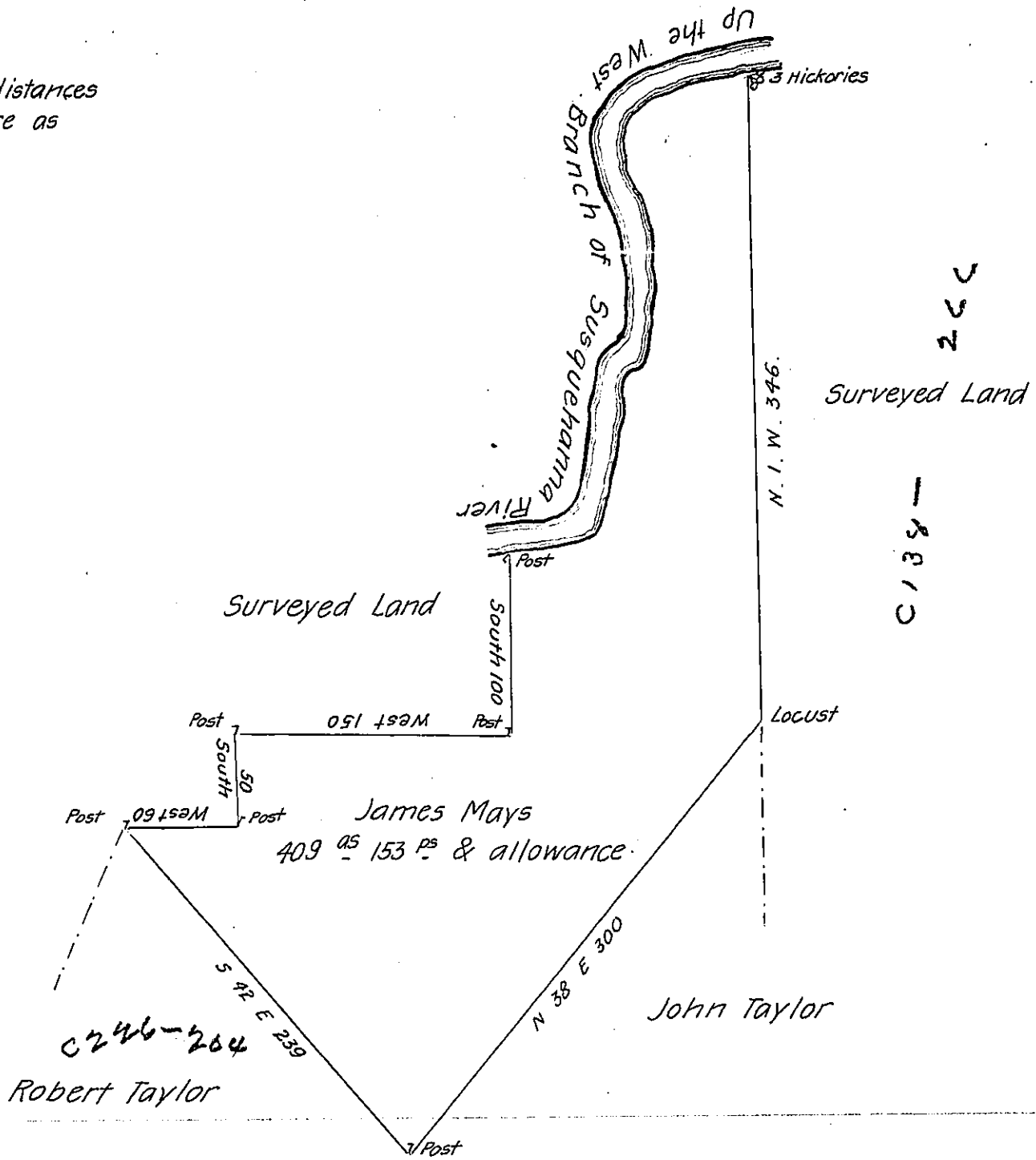


The Courses & distances
up the River are as
follow Viz —

- S 69 W 73
- S 15 E 54
- S 5 W 57
- S 10 W 26
- N 80 W 2
- S 12 W 88
- S 76 W 46
- 343



Situate on the South side of the West Branch of Susquehanna River about one mile and a half above the mouth of Anderson's Creek in Allegheny Township Huntingdon County containing four hundred and nine acres one hundred and fifty three Perches and the usual allowance for Roads.

Surveyed the 5th day of September 1800 for James Mays in pursuance of his Warrant dated 30th day of January 1800

John Canan D.S.

To Samuel Cochran Esq^r

Surveyor General of Penns^a

IN TESTIMONY that the above is a copy of the original remaining on file in the Department of Internal Affairs of Pennsylvania, made conformably to an Act of Assembly approved the 16th day of February, 1833, I have hereunto set my Hand and caused the Seal of said Department to be affixed at Harrisburg, this fifth day of December 1905

James D. Brown
Secretary of Internal Affairs.